

Modular Room Control (MRC) Software and Upgrade

Installation

CIS5 Installation Prerequisites

The computer on which you want to install CIS5 must meet the following requirements:

- IBM® Personal Computer (PC) or compatible computer with a Pentium® processor or higher
- Microsoft® Windows® 2000 Professional operating system installed
- 128 MB of Random Access Memory (RAM) minimum
- 2 GB free disk space on the hard disk
- CD-ROM and floppy disk drive
- SVGA or better display; 1024 x 768 resolution recommended
- mouse or similar pointing device
- Network Card supporting TCP/IP protocol if connecting the CIT5 terminal to the CIS server via network. Network drivers and services should be installed and operating prior to installing CIT5.

Note: If possible, CIS5 should be installed on its own partition, different from the drive C containing the Windows 2000 system files.

- CD-ROM and floppy disk drive
- Super VGA (SVGA) or better display; 1024 x 768 resolution recommended
- mouse or similar pointing device
- Network Card supporting Transmission Control Protocol/Internet Protocol (TCP/IP) if connecting remote CIT5 terminals to the CIS server via network. Network drivers and services should be installed and operating prior to installing CIS5.

CIT5 Installation Prerequisites

The computer on which you want to install CIT5 must meet the following requirements:

- IBM PC or compatible computer with a Pentium processor or higher
- Windows 98, Windows 2000 or Windows NT® Version 4.0 workstation operating system installed
- 64 MB of RAM minimum
- 2 GB free disk space on the hard disk

Note: If possible, CIT5 should be installed on its own partition, different from the drive C containing the Windows system files.

CIS5 Installation Procedure

To install CIS5:

1. Insert the CIS5/CIT5 Setup CD into the CD-ROM drive.
2. Using **My Computer** or **Windows Explorer**, open the **Software\CIS5Setup_5XX** folder on the CD (XX=version) and double-click **Setup.exe** to begin CIS5 installation. The **Welcome** window opens.
3. Click **Next**. The **Software License Agreement** window appears. Click **Yes** to accept the software license agreement. The **Choose Destination Location** window appears. The default location of **C:\Program Files\Inncom\Cis5** should be used under normal circumstances. The **Select Program Folder** window appears.

Note: To select a different location, click the **Browse** button to open the **Choose Folder** window shown in Figure 1. Enter the desired location in the Path: line then click **OK**. Figure 1 shows CIS5 is installed in **D:\Inncom\Cis5**. Verify the destination folder is correct and click **Next**.



Figure 1: CIS5 Choose Installation Folder

4. Enter the program folder that the Inncom CIS5 program should use in the **Program Folder** entry box and click **Next**. This is the folder listed when you select **Start>Programs** from the Windows desktop. It is recommended that you use **Inncom** as the folder name. You may also choose from the existing program folders listed.

Note: The **Engineering Data Available?** window appears. Installation of CIS5 begins.

If an **Engineering Data Disk** has been provided, insert the disk in the computer floppy drive, click the **Yes** option and click **Next**. The **Engineering Data Disk** contains information about the room and floor structure of the hotel.

If an **Engineering Data Disk** has not been provided, click the **No** option and then click **Next**. The room and floor information can be loaded at a later time.

5. Wait for the next window after the **Database Installation** dialog box appears.
6. Click **OK** to continue when the **Windows Script Host** dialog box appears.
7. Click **Next** when the **DB Installation** window appears; it indicates a **Successfully installed database**.
8. Click **Finish** on the **Setup Complete** window to complete the CIS5 installation.

CIT5 Installation Procedure

To install CIT5:

1. Using **My Computer** or **Windows Explorer**, open the **Software\CIT5Setup_5XX** folder on the CD (XX=version) and double-click on the **Setup.exe** file to begin CIT5 installation. The CIT5 **Welcome** window appears.
2. Click **Next** to open the **Software License Agreement** dialog box. Click **Yes** to accept the software license agreement. The **Choose Destination Location** dialog box appears. The default location is **C:\Program Files\Inncom\CIT5**.

If installing just CIT5, use the default location or click the **Browse** button to open the **Choose Folder** window shown in Figure 2 and select the location. Click **Next**.

If installing CIT5 on the same computer as CIS5, the **Inncom\Cis5** folder already exists. You must install CIT5 into this existing **Inncom** folder. Click **Next**.

IMPORTANT: Make sure you type CIT5 and not CIS5. Otherwise you overwrite the already installed CIS5 files.

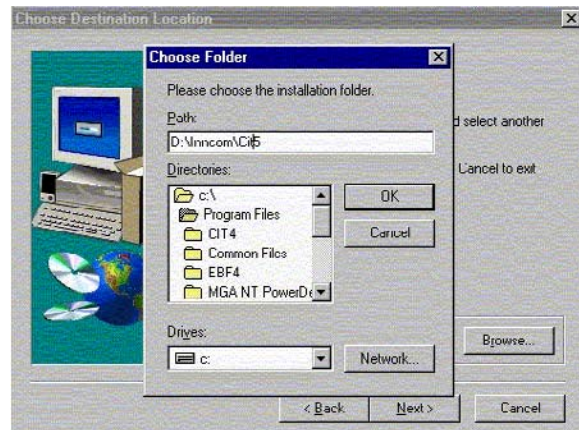


Figure 2: CIT5 Choose Installation Folder

4. Click **OK** when the **IRG4Srv** dialog box appears.
5. Click **Finish** when prompted to complete CIT5 installation.
6. Close any open CIS5 installation windows by clicking the **X** in the upper right corner of the window.

CIS5/CIT5 Software Upgrade Instructions

Any software upgrades to the Inncom CIS5 and CIT5 software are performed using one of the two following methods:

- full upgrade of CIS5 and CIT5 to the new version

A full CIS5 upgrade replaces all files. An upgrade CD is provided to the property with the installation and setup programs required to perform the upgrade.

Perform the preliminary steps listed in the *Preliminary Steps* section to prepare the CIS5 and CIT5 computers for the upgrade, then perform the steps listed in the *Full Upgrade Instructions* section to complete the full upgrade.

- partial upgrade of existing CIS5 and CIT5 versions

A partial upgrade only replaces certain files located in the software directories on the CIS5 and CIT5 computers. Typically, the upgrade file is a compressed file (.zip) that contains the upgrade files. This Zip® file is usually provided to the property on a 3.5-inch floppy, or it can be remotely loaded onto the Inncom CIS5 server computer via a modem using **PCAnywhere**.

Once the zipped file is loaded onto the computer, it is **unzipped** into the Inncom CIS5 and CIT5 folders, overwriting the existing files.

Perform the steps listed in the *Preliminary Steps* section to prepare the CIS5 and CIT5 computers for the upgrade, then perform the steps listed in the *Remote (Partial) Upgrade Instructions* section to complete the partial upgrade.

IMPORTANT: Any upgrade to CIS5 and CIT5 involves upgrading the CIS5 software on the server computer and upgrading the CIT5 software on all CIT5 terminals. You are not able to log a remote CIT5 terminal on to the CIS5 server if the CIS5 and CIT5 versions do not match.

Preliminary Steps

Perform the following steps **in the order listed** prior to starting either a full upgrade or partial upgrade. These steps shut down CIT5 on all CIT5 terminals and CIS5 on the server:

1. Go to each computer running CIT5 and select **User>Logout** from the menubar across the top of the CIT5 window. Select **File>Exit** from the menubar to close CIT5.

Note: CIT5 may also be running on the same computer that runs CIS5. If CIS5 and CIT5 are running on the same computer, you must also log off and shut down CIT5 on that computer.

Note: If you do not have access to a particular CIT5 terminal to log off and shut down, Step 2 forces any remaining CIT5 terminals that may be logged on to the CIS5 server to disconnect. All CIT5 terminals must be disconnected from the CIS5 server before upgrading any software.

2. Go to the server computer running CIS5. Select **Diagnostics>Disconnect CIT** from the CIS5 menubar to make sure all CIT5 terminals are logged off from CIS5.

Note: If a **CIS Access Locked** window appears when you click on the CIS5 menubar, enter **admin** as the username and **cis5** as the password. Click **OK**. This is a feature to prevent an unauthorized user from altering CIS5 settings. You can now select

Diagnostics>Disconnect CIT from the CIS5 menubar.

3. Shut down CIS5 by selecting **File>Exit** from the CIS5 menubar.

Full Upgrade Instructions

A full upgrade of CIS5 and CIT5 is identical to the original installation procedure listed in the *CIS5 Installation Procedure* and *CIT5 Installation Procedure* section. Please read the precautions listed below, and then go to the *Installation* section to perform the full upgrade.

1. **Do not** uninstall or remove the existing CIS5 and CIT5 software before installing the full upgrade. Doing so corrupts the Microsoft Structured Query Language (MSSQL) database server installation on the computer that the CIS5 software requires.



CAUTION: When prompted for the installation location for CIS5 and CIT5 in the *Installation* section, you **must** specify the current location where CIS5 and CIT5 are installed. These locations are typically one of the following:

“C:\Program Files\Inncom\Cis5” for CIS5 “C:\Program Files\Inncom\Cit5” for CIT5

or

“D:\Inncom\Cis5” for CIS5
“D:\Inncom\Cit5” for CIT5

Remote (Partial) Upgrade Instructions

To install the CIS5 and CIT5 upgrade files:

1. Obtain the two self-extracting files that contain the CIS5 and CIT5 Upgrade. They are called **CISUpdate_5XX.exe** and **CITUpdate_5XX.exe** where "XX" indicates the CIS5/CIT5 version number.
2. Copy both files into a designated folder on the hard disk for future use if needed again.
3. Using **My Computer** or **Windows Explorer**, find the **CISUpdate_5XX.exe** file you just saved and double-click it. The WinZip self-extractor utility starts automatically.
4. Click the **EXTRACT** button and select the location where you want to extract the update files. This location should be where the current CIS5 program is installed. Typically:
"C:\Program Files\Inncom\Cis5"
or
"D:\Inncom\Cis5"
5. Verify the **Overwrite Files Without Prompting** check box is checked and then click the **UNZIP** button to install the update files into the directory.
6. Using **My Computer** or **Windows Explorer**, go to the folder where you just installed the update files and double-click on the **CIS5 Update.BAT** file to begin the installation. Several notification windows appear stating that a file has been successfully registered.

7. Click **OK** for each.

Note: The CIS5 upgrade is complete. Continue with the remaining steps to upgrade CIT5.

8. Using **My Computer** or **Windows Explorer**, find the **CITUpdate_5XX.exe** file and double-click on it. The WinZip® self-extractor utility automatically starts.
9. Click the **BROWSE** button and select the location where you want to extract the update files. This location should be where the current CIT5 program is installed. Typically:
"C:\Program Files\Inncom\Cit5"
or
"D:\Inncom\Cit5"
9. Verify the **Overwrite Files Without Prompting** check box is checked then click **UNZIP** to install the update files into the directory.
10. Using **My Computer** or **Windows Explorer**, go to the folder where you just installed the update files and double-click on the **CIT5 Update.BAT** file to begin the installation. Several notification windows appear stating that a file has been successfully registered.
11. Click **OK** for each. The CIT5 upgrade is complete.



Controls Group
507 E. Michigan Street
P.O. Box 423
Milwaukee, WI 53201

Published in U.S.A.
www.johnsoncontrols.com