

At a Glance

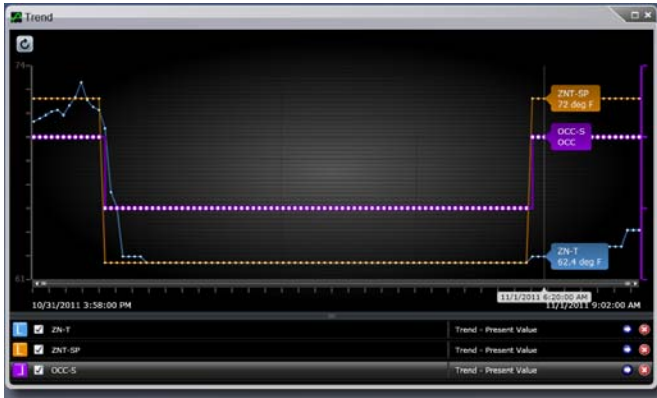
# What's New for Graphics+ Release 1.2

## Introduction

This document provides an overview of the Release 1.2 enhancements to the Johnson Controls® Graphics+ feature that is part of the Metasys® system of products. For more details, refer to the Graphics+ technical documentation and Help systems.

## Trend Module

The new Trend module displays local trend data for up to four user-specified Metasys items simultaneously. This module optimizes end-user workflow by providing direct access to historical trend information within each graphic, allowing more complete and accurate diagnosis of building and system conditions.



The Trend Module is available from within the Metasys Site Management Portal UI and Ready Access Portal UI. Standard features of the new Trend module include:

- display of a historical trend chart directly from within the graphic
- display of up to four Metasys trend items at the same time, with the ability to show or hide each trend
- ability to zoom in and out within the chart to more closely detect problem areas
- ability to navigate directly to the trended item when further analysis is required

## Room Control Module for a Single Room

A new version of the Room Control Module, designed to make floor plan graphics consistent with system graphics, is now available. This single-room Room Control Module is intended for use with terminal unit graphics, such as VAV and Fan Coil graphics. The module is configured with the Graphic Generation Tool (GGT) to show room condition information. This is different from the currently available Room Control Module that dynamically displays information when you select any room on a floor plan graphic. The addition of the single room Room Control Module ensures that the display of room conditions is consistent across any type of graphic that contains room information.

## Several New Symbols Now Available

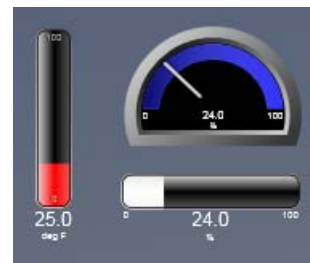
Several new Graphic Enterprise Library (GEL) symbols are provided with this new release. Built-in animation behavior is featured with some of these symbols. The following table briefly describes each new symbol.

## New Symbols in Graphics+ Release 1.2

Image	Name and Description
	<b>Basic Shapes</b> Shapes that turn color based on the current state or status of the bound item. Available shapes include a circle, square, and triangle. These types of symbols are typically used as indicator lights on a graphic to alert you of problem areas.
	<b>Exhaust Box</b> A symbol that represents a basic exhaust box.
	<b>Fan</b> Animated fan blades that spin and change color based on the current state of the equipment (for example, running or stopped).
	<b>Fin Tube</b> A symbol that represents a basic fin tube.
	<b>Heating/Cooling Coil</b> A water coil that can switch from heating to cooling based on the value of a bound item. The coil uses color to indicate whether it is used for heating or cooling.
	<b>Johnson Controls Logo</b> A symbol that represents the Johnson Controls logo.
	<b>Network Sensor</b> A symbol that represents a basic network sensor. Multiple configurations are available.
	<b>Switch</b> A circular, two- or three-state switch with labels at each position.

## New Gauges

The horizontal, vertical, and semicircle gauges can be used to create energy dashboards that provide an overview of building performance. The gauges are designed for easy readability.



## Large Site Support

The Graphic Generation Tool (GGT) is now optimized to handle large Metasys sites, such as those with 100 supervisory engines or more. The navigation views now appear more quickly and the tool can display the customized Metasys All Items view, making it significantly easier to find the Metasys objects you want to include on a graphic. The customized All Items view is displayed in wizards and in the Metasys Binding panel.

## What's New for Graphics+ Release 1.2 (Continued)

### New GGT User Operations

New user operations have been added to GGT in this release, including:

- a print function that allows you to send an open graphic to any installed printer
- workflow improvements for creating, opening, and saving graphics to a Metasys host, with screens that retain the last selected location on the Metasys host
- the Metasys Binding panel now supports Ctrl+click to unselect an item in the navigation view
- automatic creation of an image control when you drag and drop a supported image file directly onto the graphic
- files that contain a .XAML extension can be associated with GGT so that the application starts automatically when you double-click an XAML file from Microsoft® Windows® Explorer. The GGT icon appears next to XAML files when listed with Windows Explorer.

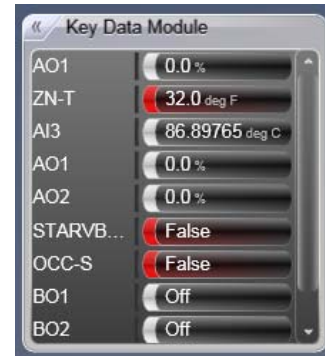
### Support for Foreign Languages

The Graphic Generation Tool now supports setting the language for menus, tool tips, and error messages that appear in the tool. Default Metasys binding strings used within each symbol (for example, \*.ZN-T) are also shown in the selected language. In addition, the Metasys Graphics+ Viewer displays live data using the currently configured Metasys language.

### Other Enhancements

Other enhancements at Release 1.2 include:

- The ability to disable inline commanding for the Inline Command Box, Advanced Value Box, and Key Data Item elements.
- Animation has been added to the VAV symbol.
- Import of computer-aided design (CAD) blocks to provide support for a wider variety of CAD files.
- A slider bar is displayed within the Key Data module.



- GGT memory consumption issues are resolved, and the CAD file import process is faster.
- Significantly improved performance when displaying graphics within the Site Management Portal, System Configuration Tool (SCT), and Ready Access Portal UIs.
- Graphics+ buttons can launch an external application to open a file based on its file association (for example, Adobe® Reader® for .pdf files and Microsoft® Word for .doc and .docx files).
- For improved usability, the user actions panel now appears when you right-click an Inline Command Box, Advanced Value Box, or Key Data item. Previously, the panel was visible by left-clicking the arrow.
- The small arrow that appeared on the Inline Command Box, Advanced Value Box, and Key Data elements was removed to provide more space for displaying the item's value.
- Microsoft Silverlight 5.0 or later is required on the client computer to view Graphics+ objects at Release 1.2.
- Metasys Software Quick Patch 5.2.10 is required at the Site Director to support GGT and the Graphics+ Viewer at Release 1.2.